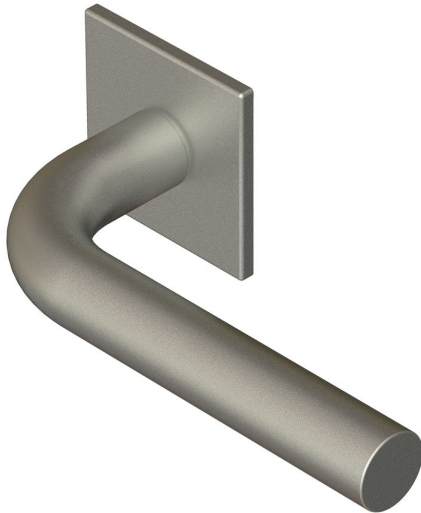
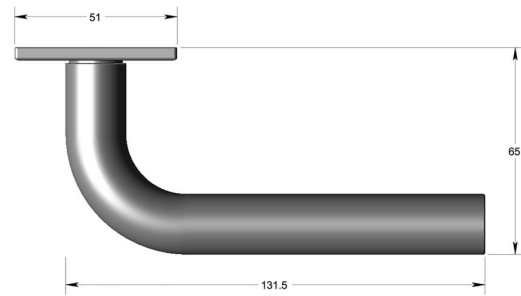


Straight lever handle 19mm dia on square rose



Product image



Dimensions drawing (DIM)

Reference

FL102 19 SR4 SSS

Finish

Incasa satin stainless steel

Material

Stainless steel 316

Backplate

SR4

Description

19mm dia solid round section handle
Concealed fixing
High performance bearing rose
Back to back fixings
Conforms to EN1906 high usage
Suitable for use on fire doors