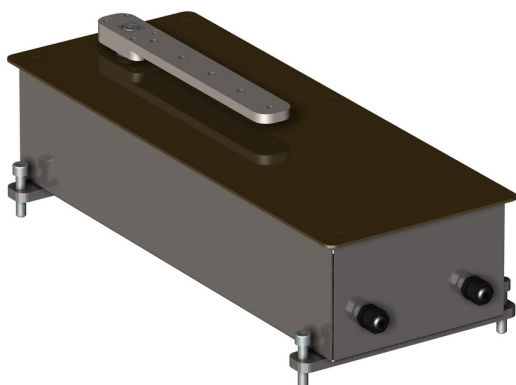
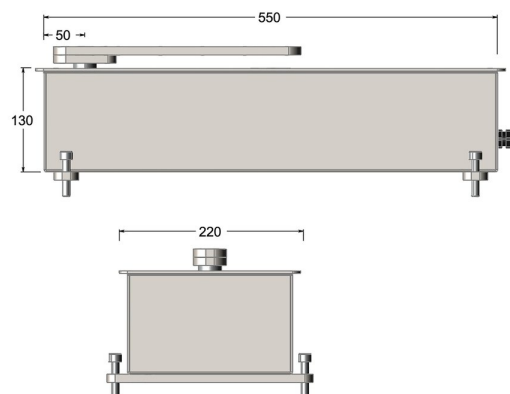


Underfloor automatic door operator



Product image



Dimensions drawing (DIM)

Reference

FAD001 MBZ

Material

Stainless steel 316

Finish

Incasa medium bronze

Description

For door leaf weights up to 400kgs
 For door widths up to 1400mm wide
 IP67 waterproof stainless steel housing
 Fully adjustable opening and closing forces
 Low noise motor ideally suited to any application
 Sequential closing for rebated doors
 Suitable for high wind situations