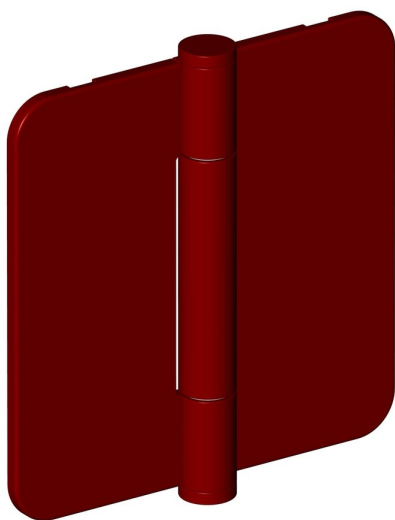
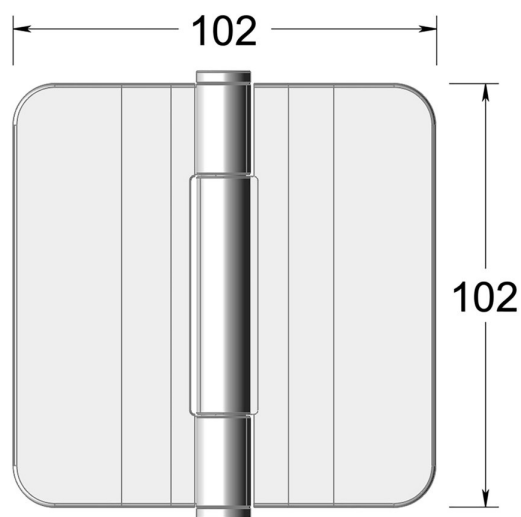


## High performance concealed bearing COVER-PLATE hinge



Product image



Dimensions drawing (DIM)

### Reference

FH011 R 100 RAL

### Finish

RAL

### Corners

Radius

### Material

Stainless steel 316

### Size

102x102mm

### Description

Suitable for doors up to 160kgs  
High performance low friction / low wear concealed bearing  
Tested to EN1935 grade 14  
For use on timber fire doors up to FD120  
Certifire approved  
UKCA marked