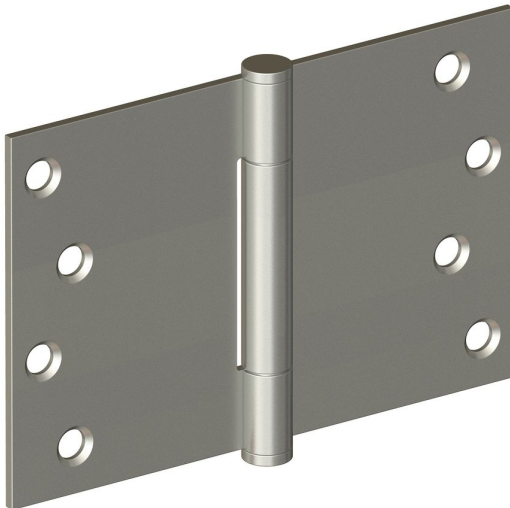
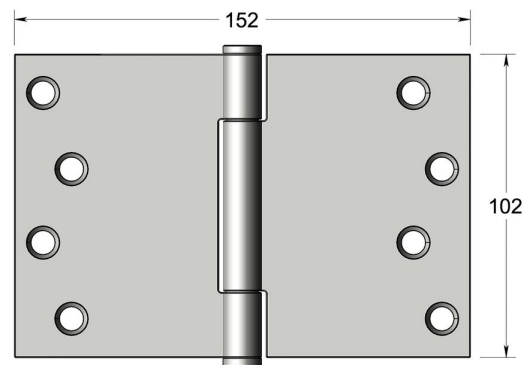


## High performance concealed bearing butt hinge



Product image



Dimensions drawing (DIM)

**Reference**

FH001 S 150 SSS

**Finish**

Incasa satin stainless steel

**Corners**

Square

**Material**

Stainless steel 316

**Size**

102x152mm

**Description**

Suitable for doors up to 160kgs  
 High performance low friction / low wear concealed bearing  
 Tested to EN1935 grade 14  
 For use on timber fire doors up to FD120  
 Certifire approved  
 UKCA marked