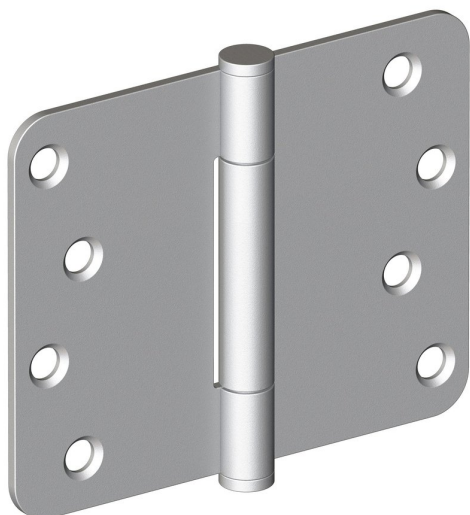
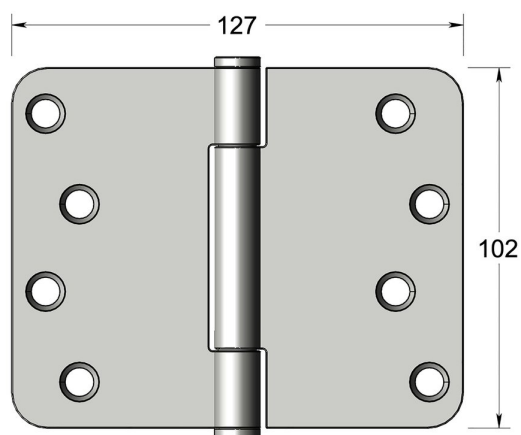


High performance concealed bearing butt hinge



Product image



Dimensions drawing (DIM)

Reference

FH001 R 125 SC

Finish

Trad satin chrome

Corners

Radius

Material

Stainless steel 316

Size

102x127mm

Description

Suitable for doors up to 160kgs
 High performance low friction / low wear concealed bearing
 Tested to EN1935 grade 14
 For use on timber fire doors up to FD120
 Certifire approved
 UKCA marked