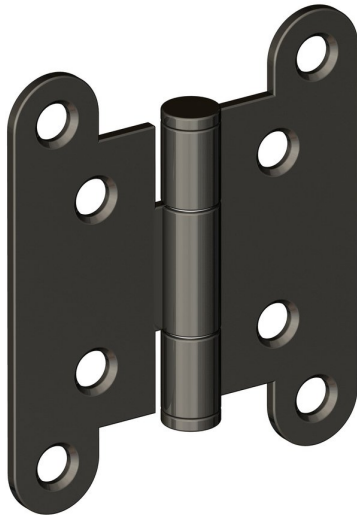
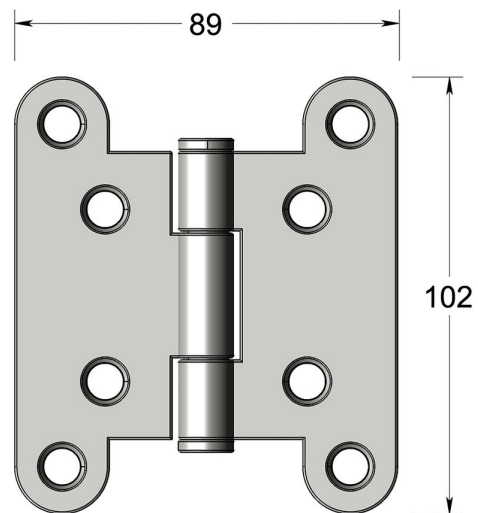


High performance butterfly butt



Product image



Dimensions drawing (DIM)

Reference

FH061 PBKN

Finish

Trad polished black nickel

Corners

Radius

Material

Stainless steel 316

Size

102x89mm

Description

Suitable for doors up to 120kgs
 High performance low friction / low wear concealed bearing
 Tested to EN1935 grade 13
 For use on timber fire doors up to FD120
 Certifire approved
 UKCA marked