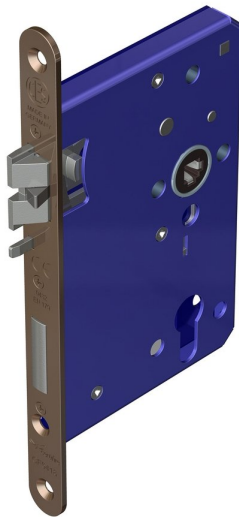
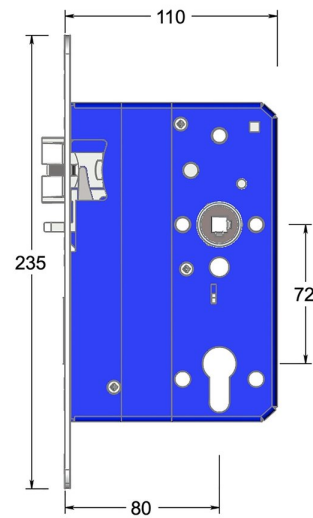


Mortice escape lock with antitrust and triple latch



Product image



Dimensions drawing (DIM)

Reference

FTL009R 80 PPVDBZ

Finish

Incasa polished PVD bronze

Forend shape

Rounded forend

Material

Stainless steel 316

Backset

80mm backset

Description

Low friction triple latchbolt for reduced closing force
Bushed TENAX clamped follower
Holed for euro profile cylinder
Anti-thrust bolt
Multiple backsets to suit different door stiles
Tested to EN 12209 grade X
Suitable for timber fire doors up to FD120
Certifire tested
UKCA marked