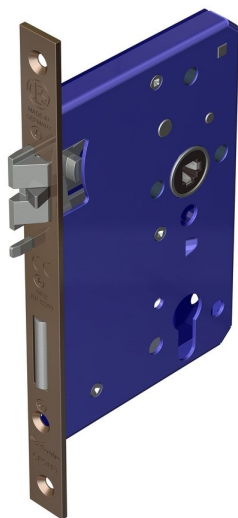
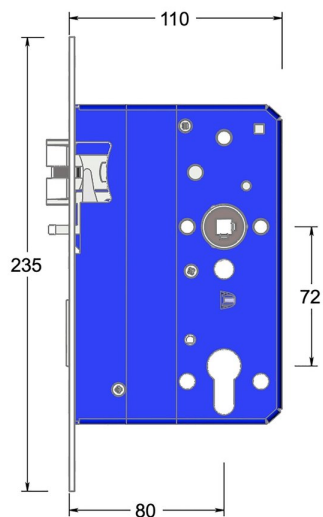


## Mortice euro profile sashlock with anti-thrust and triple latch



Product image



Dimensions drawing (DIM)

**Reference**

FTL003S 80 PPVDBZ

**Finish**

Incasa polished PVD bronze

**Forend shape**

Square forend

**Material**

Stainless steel 316

**Backset**

80mm backset

**Description**

---

Low friction triple latchbolt for reduced closing force  
Bushed TENAX clamped follower  
Holed for euro profile cylinder  
Anti-thrust bolt  
Multiple backsets to suit different door stiles  
Tested to EN 12209 grade X  
Suitable for timber fire doors up to FD120  
Certifire tested  
UKCA marked