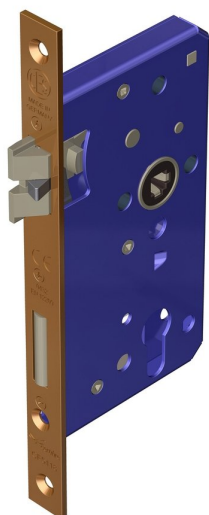
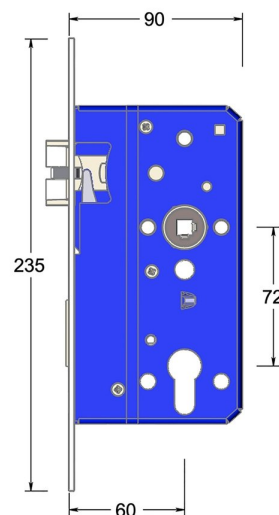


## Mortice euro profile sashlock with triple latch



Product image



Dimensions drawing (DIM)

**Reference**

FTL002S 60 PPVDCU

**Finish**

Incasa polished PVD copper

**Forend shape**

Square forend

**Material**

Stainless steel 316

**Backset**

60mm backset

**Description**

Low friction triple latchbolt for reduced closing force  
 Bushed TENAX clamped follower  
 Holed for euro profile cylinder  
 Multiple backsets to suit different door stiles  
 Tested to EN 12209 grade X  
 Suitable for timber fire doors up to FD120  
 Certifire tested  
 UKCA marked