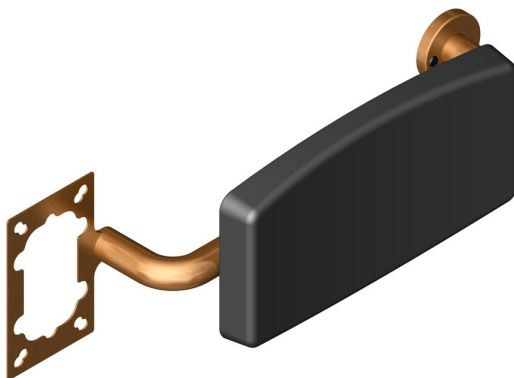
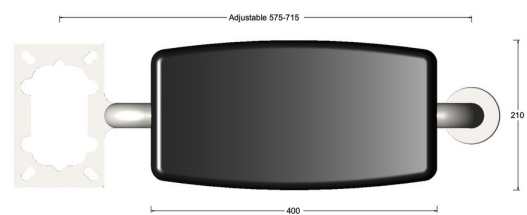


Adjustable backrest with bkt for ONE drop down rail



Product image



Dimensions drawing (DIM)

Reference

FGR149 1B SPVDCU

Finish

Incasa satin PVD copper

Material

Stainless steel 316

Description

Heavy duty adjustable padded backrest
Single fixing plate for hinged support rail
Concealed fixings
150kg weight capacity
Conforms to EN 12182
Fixing packs available for most wall constructions