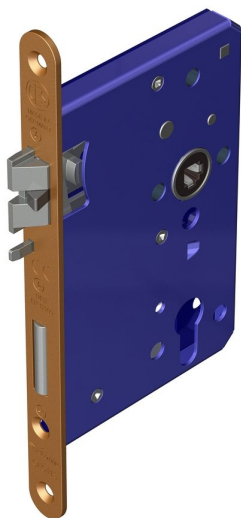
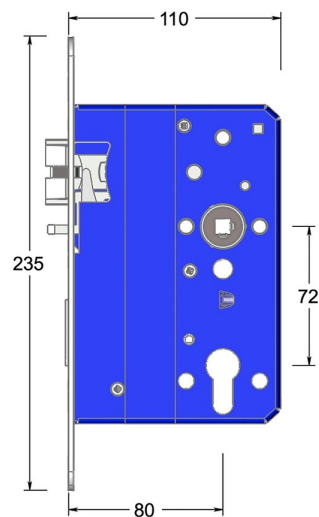


Mortice euro profile sashlock with anti-thrust and triple latch



Product image



Dimensions drawing (DIM)

Reference

FTL003R 80 SPVDCU

Finish

Incasa satin PVD copper

Forend shape

Rounded forend

Material

Stainless steel 316

Backset

80mm backset

Description

Low friction triple latchbolt for reduced closing force
Bushed TENAX clamped follower
Holed for euro profile cylinder
Anti-thrust bolt
Multiple backsets to suit different door stiles
Tested to EN 12209 grade X
Suitable for timber fire doors up to FD120
Certifire tested

Low friction triple latchbolt for reduced closing force
Bushed TENAX clamped follower
Suitable for plain or rebated doors
Multiple backsets to suit different door stiles
Tested to EN 12209 grade X
Suitable for timber fire doors up to FD120
Certifire tested
UKCA marked