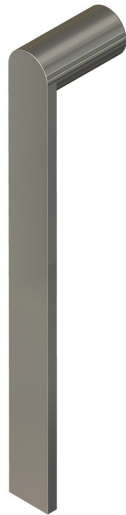
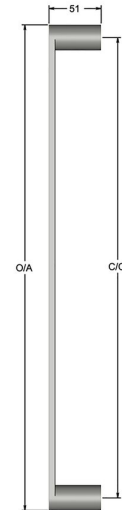


## Thin Flat mitred pull handle



Product image



Dimensions drawing (DIM)

**Reference**

FP032 PSS

**Material**

Stainless steel 316

**Finish**

Incasa polished stainless steel

**Description**

Solid pull handle  
Available any length up to 2400mm  
May require additional supports depending on length  
Fixings available for most door construction