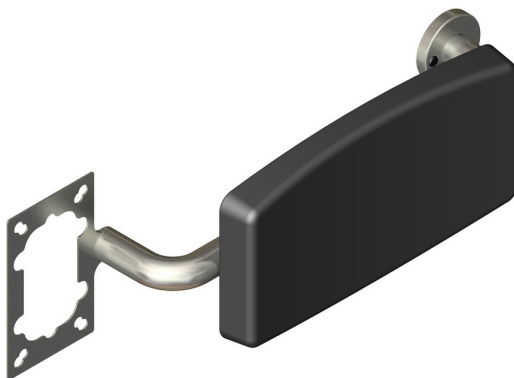
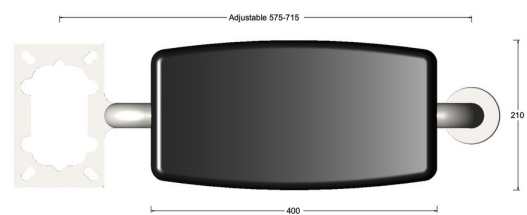


Adjustable backrest with bkt for ONE drop down rail



Product image



Dimensions drawing (DIM)

Reference

FGR149 1B SSS

Finish

Incasa satin stainless steel

Material

Stainless steel 316

Description

Heavy duty adjustable padded backrest
 Single fixing plate for hinged support rail
 Concealed fixings
 150kg weight capacity
 Conforms to EN 12182
 Fixing packs available for most wall constructions