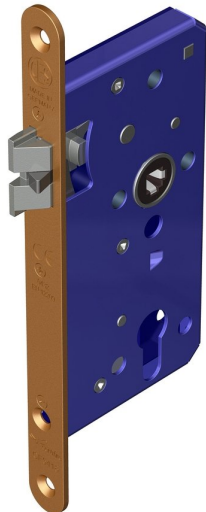
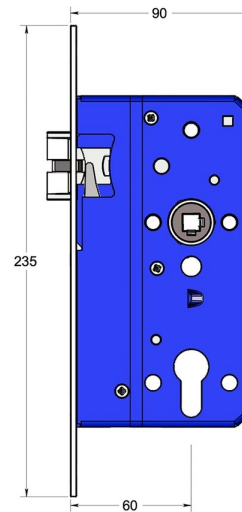


Mortice latch with triple latchbolt



Product image



Dimensions drawing (DIM)

Reference

FTL001R 55 SPVDCU

Finish

Incasa satin PVD copper

Forend shape

Rounded forend

Material

Stainless steel 316

Backset

55mm backset

Description

Low friction triple latchbolt for reduced closing force
 Bushed TENAX clamped follower
 Suitable for plain or rebated doors
 Multiple backsets to suit different door stiles
 Tested to EN 12209 grade X
 Suitable for timber fire doors up to FD120
 Certifire tested
 UKCA marked