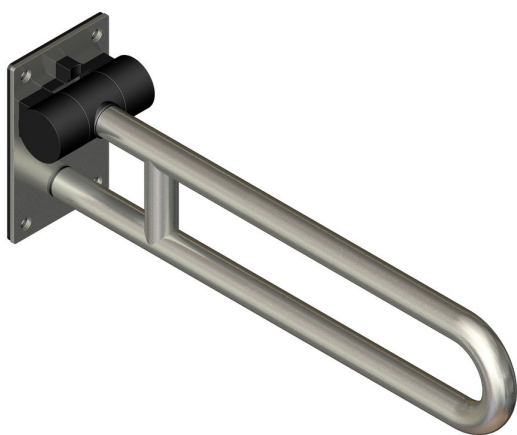
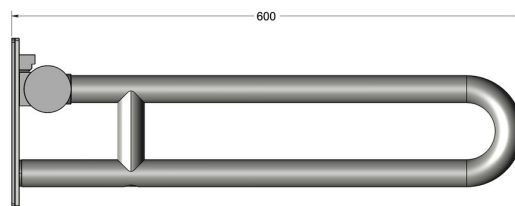


## Hinged support grab rail



Product image



Dimensions drawing (DIM)

**Reference**

FGR101 600 SSS

**Finish**

Incasa satin stainless steel

**Material**

Stainless steel 316

**Length**

600mm

**Description**

Heavy duty hinged grab rail  
Spring loaded hinge mechanism  
Adjustable friction system to stop rail accidentally falling  
150kg weight capacity  
Conforms to EN 12182  
Fixing packs available for most wall constructions