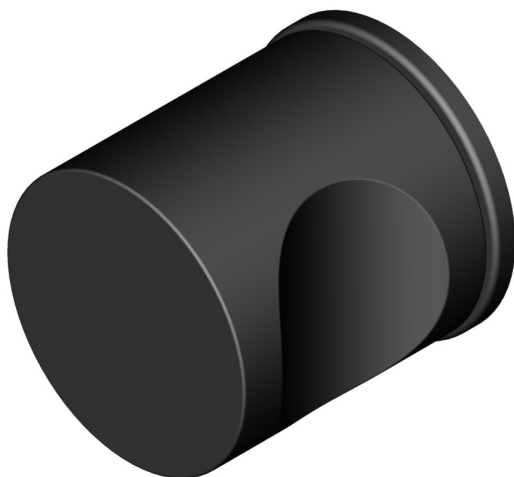
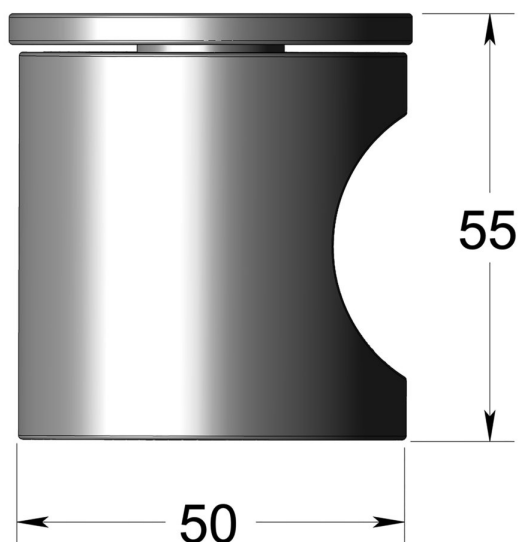


50mm dia CYLINDER knob with cutout on R/rose



Product image



Dimensions drawing (DIM)

Reference

FKN004 RR4 STBK

Finish

Diamond Ceramic ULTRA BLACK

Material

Stainless steel 316

Backplate

RR4

Description

Solid mortice knob
 Concealed fixing
 High performance bearing rose
 Back to back fixings
 Conforms to EN1906 high usage
 Suitable for use on fire doors