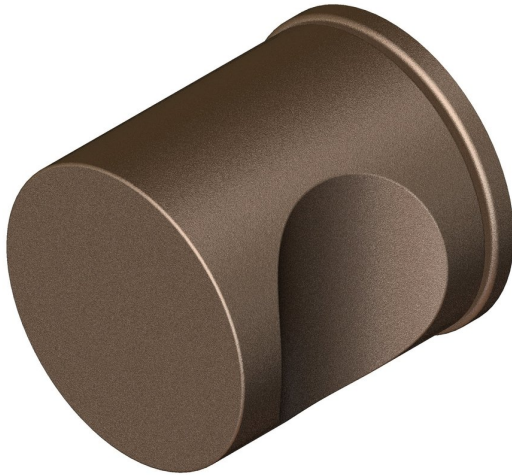
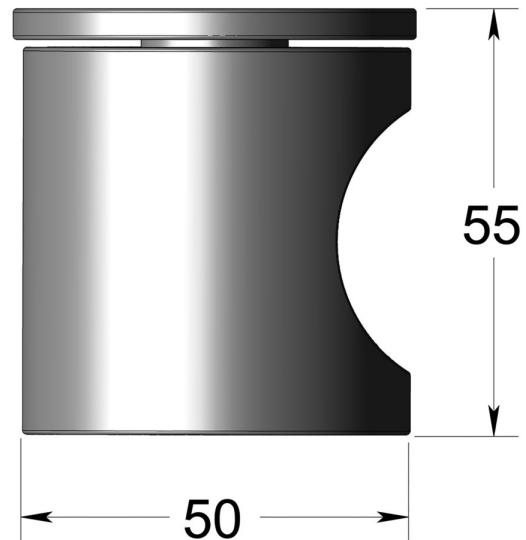


50mm dia CYLINDER knob with cutout on R/rose



Product image



Dimensions drawing (DIM)

Reference

FKN004 RR4 SPVDBZ

Finish

Incasa satin PVD bronze

Material

Stainless steel 316

Backplate

RR4

Description

Solid mortice knob
Concealed fixing
High performance bearing rose
Back to back fixings
Conforms to EN1906 high usage
Suitable for use on fire doors