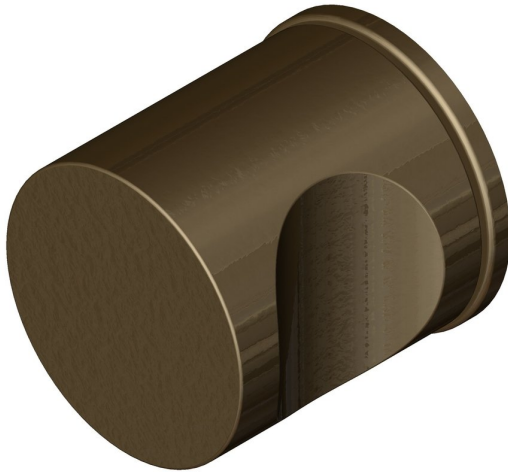
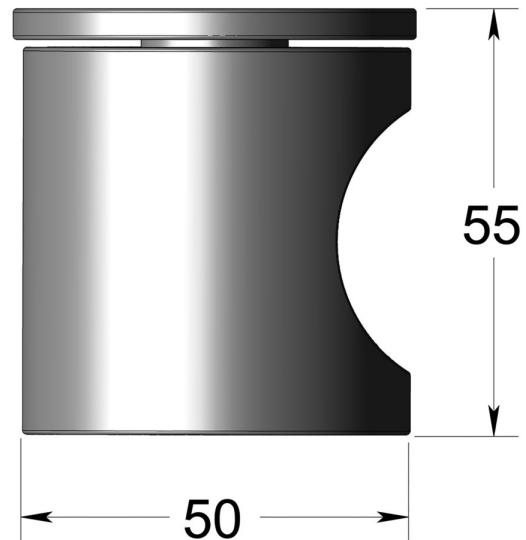


## 50mm dia CYLINDER knob with cutout on R/rose



Product image



Dimensions drawing (DIM)

**Reference**

FKN004 RR4 MBZ

**Finish**

Incasa medium bronze

**Material**

Brass

**Backplate**

RR4

**Description**

Solid mortice knob  
Concealed fixing  
High performance bearing rose  
Back to back fixings  
Conforms to EN1906 high usage  
Suitable for use on fire doors