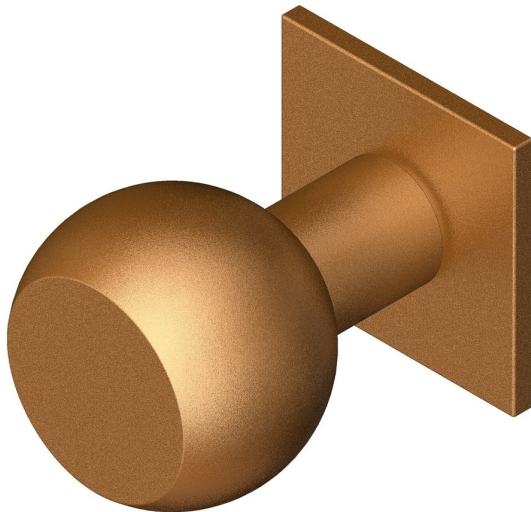
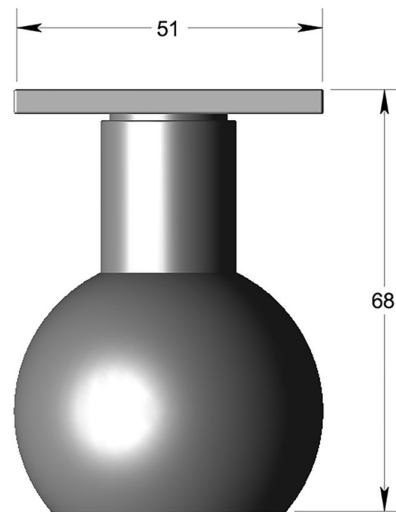


50mm dia FLAT FRONT BALL knob on square rose



Product image



Dimensions drawing (DIM)

Reference

FKN002 SR4 SPVDCU

Finish

Incasa satin PVD copper

Material

Stainless steel 316

Backplate

SR4

Description

Solid mortice knob
Concealed fixing
High performance bearing rose
Back to back fixings
Conforms to EN1906 high usage
Suitable for use on fire doors