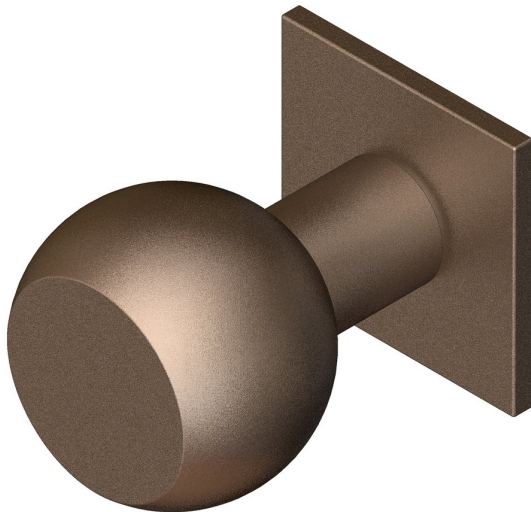
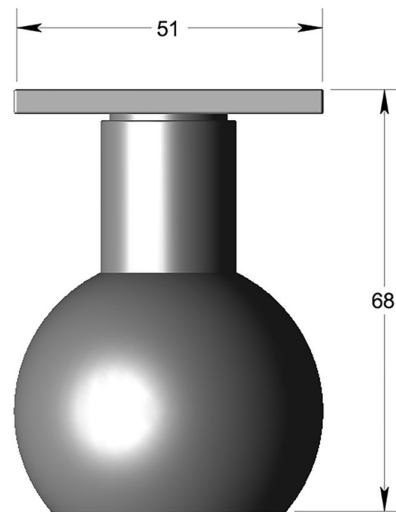


## 50mm dia FLAT FRONT BALL knob on square rose



Product image



Dimensions drawing (DIM)

**Reference**

FKN002 SR4 SPVDBZ

**Finish**

Incasa satin PVD bronze

**Material**

Stainless steel 316

**Backplate**

SR4

**Description**

Solid mortice knob  
Concealed fixing  
High performance bearing rose  
Back to back fixings  
Conforms to EN1906 high usage  
Suitable for use on fire doors