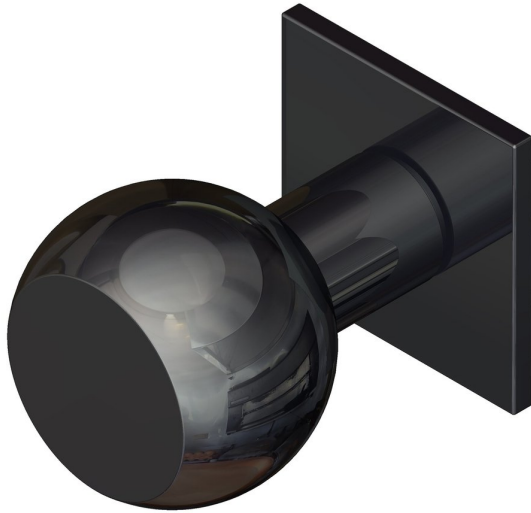
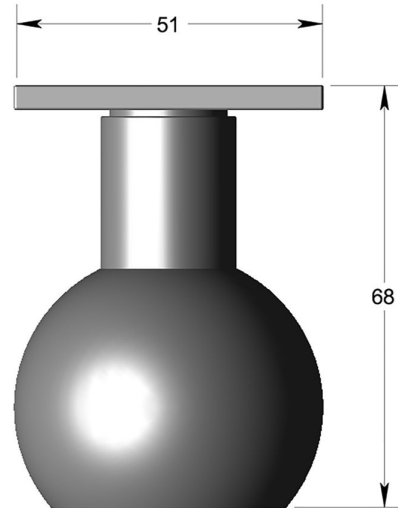


50mm dia FLAT FRONT BALL knob on square rose



Product image



Dimensions drawing (DIM)

**Reference**

FKN002 SR4 PPVDBK

**Finish**

Incasa polished PVD black

**Material**

Stainless steel 316

**Backplate**

SR4

**Description**

Solid mortice knob  
 Concealed fixing  
 High performance bearing rose  
 Back to back fixings  
 Conforms to EN1906 high usage  
 Suitable for use on fire doors