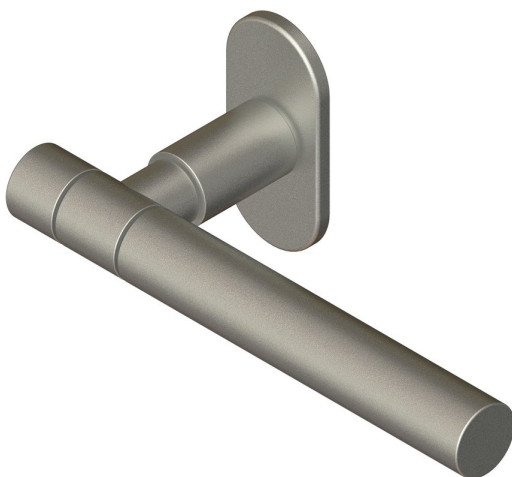
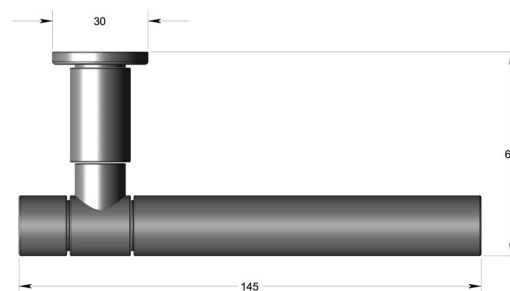


## Section lever handle 19mm dia on oval rose - Cylinder end



Product image



Dimensions drawing (DIM)

**Reference**

FL109 CE OR4 SSS

**Finish**

Incasa satin stainless steel

**Material**

Stainless steel 316

**Backplate**

OR4

**Description**

Solid lever handle  
Concealed fixing  
High performance bearing rose  
Back to back fixing  
Conforms to EN1906 high usage  
Suitable for use on fire doors