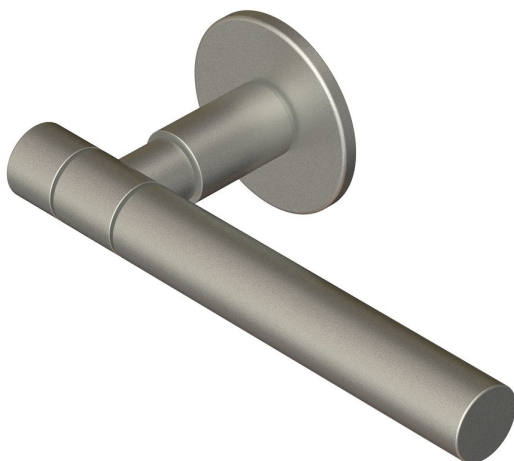
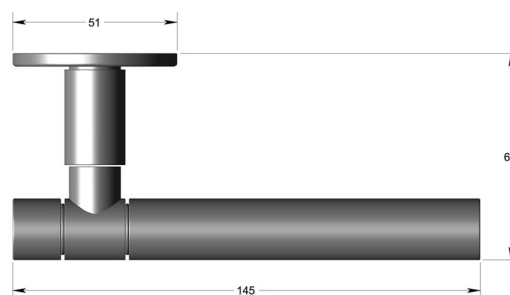


Section lever handle 19mm dia on round rose - Cylinder end



Product image



Dimensions drawing (DIM)

Reference

FL109 CE RR4 SSS

Finish

Incasa satin stainless steel

Material

Stainless steel 316

Backplate

RR4

Description

Solid lever handle
Concealed fixing
High performance bearing rose
Back to back fixing
Conforms to EN1906 high usage
Suitable for use on fire doors