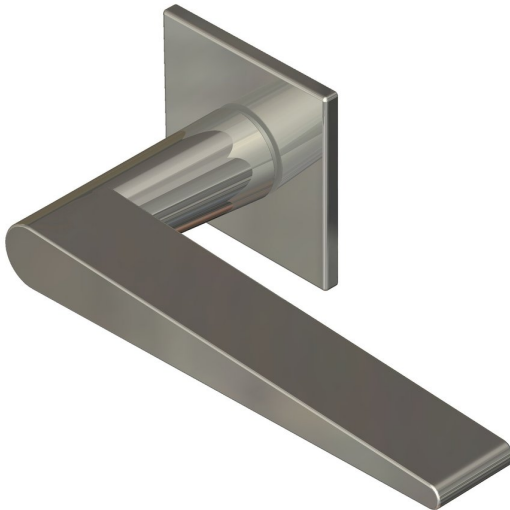
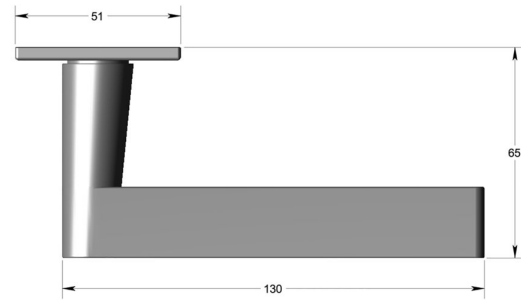


Wedge pattern lever handle on square rose



Product image



Dimensions drawing (DIM)

Reference

FL120 SR4 PSS

Finish

Incasa polished stainless steel

Material

Stainless steel 316

Backplate

SR4

Description

Solid lever handle
Concealed fixing
High performance bearing rose
Back to back fixing
Conforms to EN1906 high usage
Suitable for use on fire doors