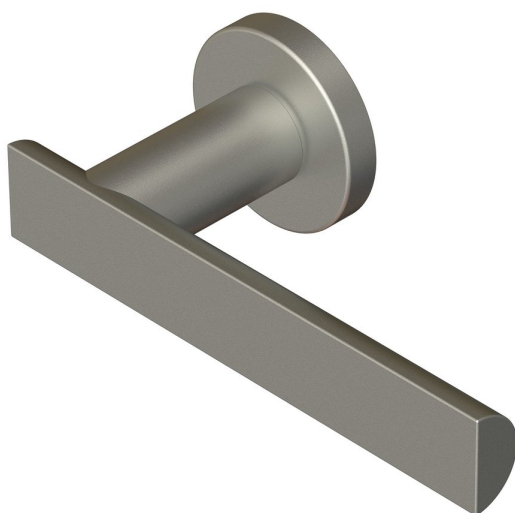
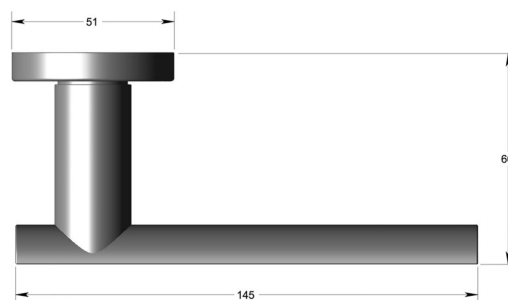


D section T-bar lever handle on sprung round rose



Product image



Dimensions drawing (DIM)

Reference

FL117 RR9 SSS

Finish

Incasa satin stainless steel

Material

Stainless steel 316

Backplate

RR9

Description

Solid lever handle
Concealed fixing
High performance bearing rose
Back to back fixing
Conforms to EN1906 high usage
Suitable for use on fire doors