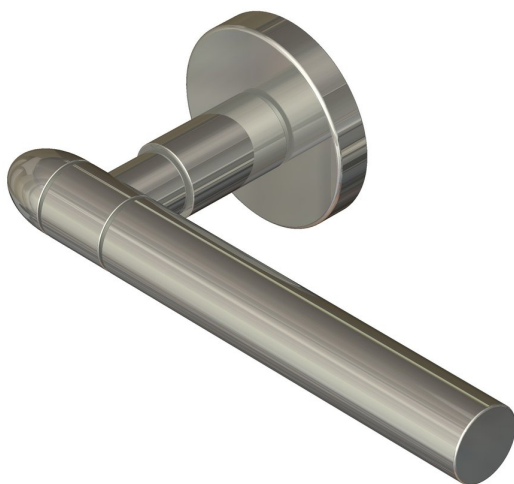
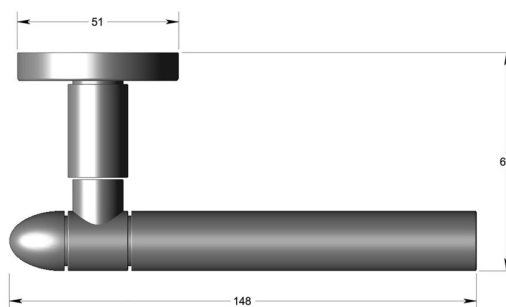


Section lever handle 19mm dia on sprung round rose - Bullet end



Product image



Dimensions drawing (DIM)

Reference

FL109 BE RR9 PSS

Finish

Incasa polished stainless steel

Material

Stainless steel 316

Backplate

RR9

Description

Solid lever handle
Concealed fixing
High performance bearing rose
Back to back fixing
Conforms to EN1906 high usage
Suitable for use on fire doors